



Even the location
sounds like royalty.

RMV II.



PURVA ATRIA
Platina

Exceptional homes for extraordinary people.
RMV IInd Stage.

The pioneers of community living!

PURVA ATRIA PLATINA: WHERE SPLENDOR AND ACCOMPLISHMENT DWELL TOGETHER

There are those who know well the thrill of success and the lifestyle that accompanies achievement. Sculpted to pamper achievers the way they deserve and located in the posh locale of RMV IIInd stage, Purva Atria Platina promises a life of grandeur, its 70 limited edition apartments offering a lifestyle that is yours for the taking. With laminated wooden/ vitrified flooring in the master bedroom, marble/ granite counter washbasins, the best modular kitchens and acrylic emulsion paint on its walls, Purva Atria Platina is majestic in every regard. Purva Atria Platina is also an icon of safety, designed keeping in mind seismic considerations and fortified by means of peripheral vigilance through CCTV, camera and boom barriers. You are invited to seek indulgence at Purva Atria Platina a gold leed* rated green building, the abode of achievers.



MASTERPLAN



Master plan is subject to change.

LEGEND

- 01 RESIDENTIAL BLOCK
- 02 SECURITY KIOSK
- 03 ARRIVAL PLAZA
- 04 CHILDREN'S PLAY LOT
- 05 SERVICE YARD
- 06 CURTAIN RAIN WALL



ZRICKS PROJ.

AMENITIES

Fun & Frolic Zone | Gymnasium | Well-decorated building lobby with air-conditioning and imported marble / granite finish | Entertainment centre with Billiards | Table Tennis and Table Games like Cards, Carom and Chess | Steam & Sauna | Jacuzzi | Swimming pool (with associated changing rooms and toilets) | Access control at key ingress/egress points via intelligent security systems | Provision for Super Market



PROJECT SPECIFICATIONS

FIXTURES AND FITTINGS

DOORS

Main door, other doors and toilet doors - solid core engineered door with matching architrave with frame and imported hardware like Dorma / Haffle / Godrej or equivalent. Living and dining balcony door - Glazed French windows with synergy glass with provision of mesh with premium hardware. Balcony and utility door - Glazed door and window of heavy gauged UPVC frames with mesh shutters.

WINDOWS

UPVC Synergy glazing sliding / hinged windows complying to green rating with mosquito mesh.

VENTILATORS

UPVC with glazed louvers / hinged and a provision for an exhaust fan.

FINISHES

FLOORING

Ground floor main entrance lobby - marble / granite. Living, dining, passages leading to bedrooms, bedrooms, attached balconies, kitchen, corridors and utility - Vitrified tiles. Master bedroom - Laminated wooden flooring. Toilets - marble. Staircase (Basement to first floor landing) - marble/ granite.

WALLS

All Interior wall faces and ceilings - These are plastered, smoothly finished PoP punning and painted with acrylic emulsion. Kitchen - granite splash board with vitrified tile / glazed ceramic tile dadoing upto 2'0" above kitchen counter. Toilets - Marble from the floor, up to roof level. Exterior fascia of building - These are plastered and painted with external grade paint and textured surfaces in selective places, as per design to give an elegant look.

CEILINGS

Architectural cornices in living, dining, foyer and passage area.

STAIR HAND RAILS AND BALCONY RAILINGS

M.S. Railings to architects design.

PLUMBING AND SANITARY FITTINGS

Toilet fitted with bathtub (for master bedroom) and with shower area for other toilets. Good quality wash basin with granite/marble counter top with basin mixer

(hot and cold water) with bottle trap for master bedroom and other toilets. Duravit or equivalent brand wall mounted EWC including seat cover, flush valve (button type) and health faucet along with Grohe or equivalent brand C. P fittings.

Kitchen - Stainless-steel sink (Double bowl single drain) with hot and cold water sink mixer Grohe / equivalent. Kitchen counter top of highly polished bull-nosed granite. Water outlet provision for water purifier above drain board in kitchen.

ELECTRICAL

Best quality cables / wiring through PVC conduits concealed in walls and ceilings. Light points, fan / exhaust points, power points, call bell point, telephone points, TV points and AC provision for living, dining and in all bedrooms. Modular switches of MK / North West or equivalent make with copper wiring. Each 4 bedroom to have 9000 W KPTCL and 3 bedroom to have 7000 W KPTCL.

INTERNET, TV AND TELEPHONE POINTS

One internet outlet in every bedroom. One outlet for TV and Telephone in the living area and in all the bedrooms. Provision for cable TV connection.

ELEVATORS, D.G. AND SECURITY

Automatic lifts with stainless-steel finish and intercom facility connected to security cabin. Back-up for common area lighting, pumps, lifts, and 3000W for 3 bedroom and 5000W for 4 bedroom apartments. Newage foolproof digital security locks for main door. Gas leak detector in all kitchens. Panic button in master bedroom and dining area. Peripheral vigilance through CC cameras and boom barriers. Video door phones for each apartment.

INTRA-COMMUNICATION SYSTEM

Intra-communication facility provided from security to each apartment and among apartments within the complex.

STRUCTURE

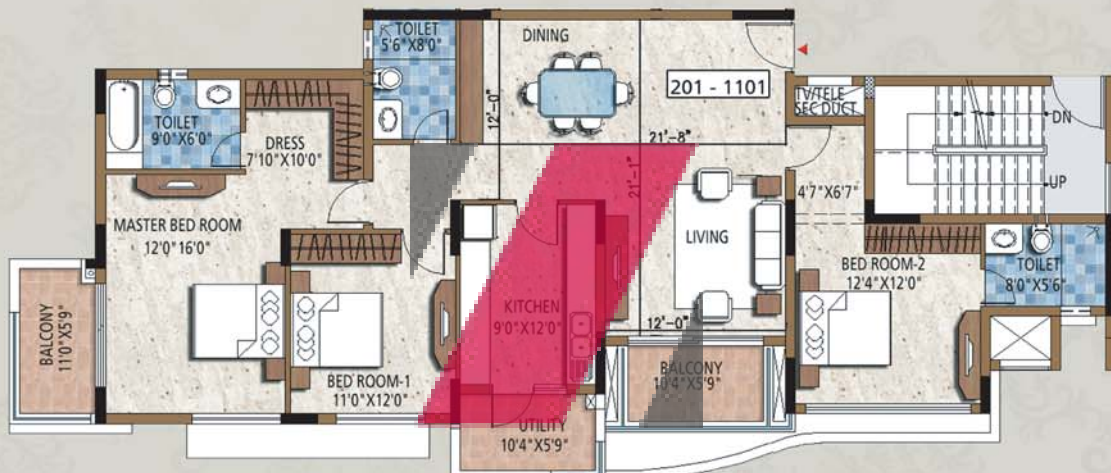
RCC framed structure designed for highest seismic considerations as stipulated by the code for better safety. The apartments are spread over from the first floor to 12th floor level. Staircases and lift in each block connect from basement to all levels.

*Building construction standards adhering to Gold Leed Certification.

FLOOR PLANS



SUPER BUILTUP AREA - 2075 sft.

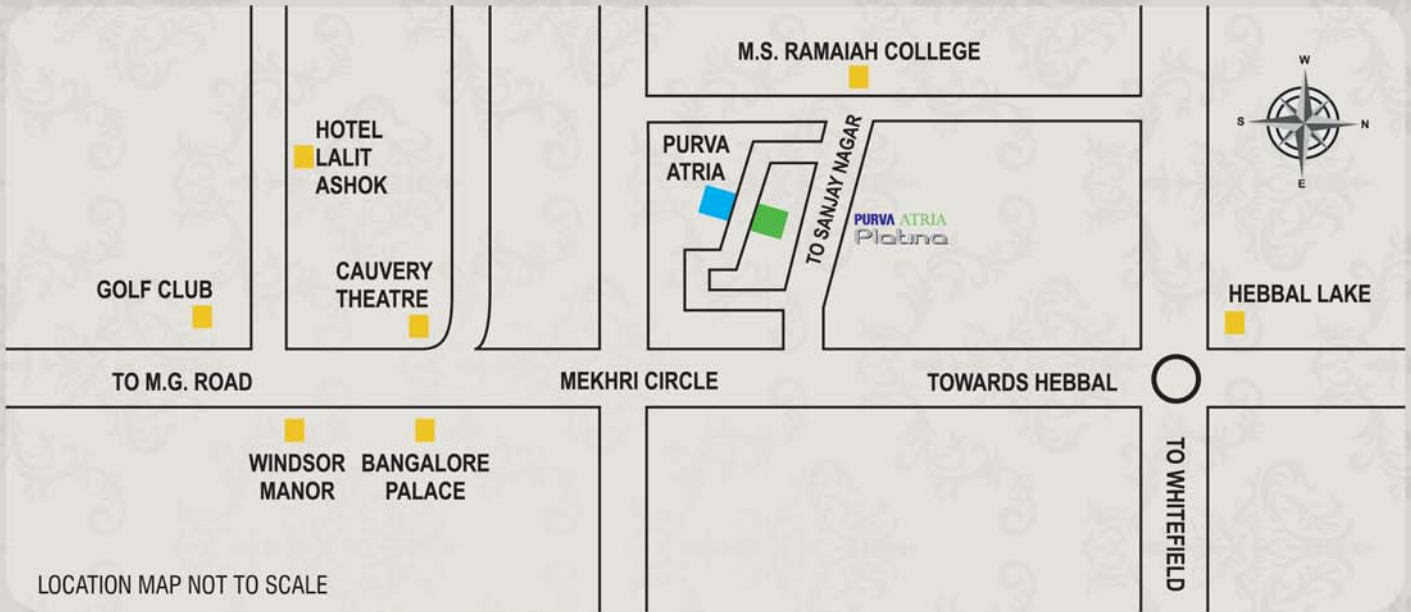


ZRICKS SUPER BUILTUP AREA - 2050 sft.



SUPER BUILTUP AREA - 1959 sft.

LOCATION MAP



PROXIMITY TO PURVA ATRIA PLATINA

2 km from Mekhri Circle | 3 km from Hebbal Flyover | 8 km from MG Road

IN YOUR NEIGHBOURHOOD

EDUCATIONAL INSTITUTES

M.S. Ramaiah Group of Educational Institutes | Sophia School | Mount Carmel College | Presidency School | Vidyaniketan School | Sindhi High School | Indian Institute of Science (IISC)

HOSPITALS

RMV Hospital | M.S. Ramaiah Hospital | Baptist Hospital | Columbia Asia Hospital

RESTAURANTS / SUPERMARKETS

McDonald's | Neel Restaurant | Sri Nandhini Palace | KFC | Cafe Coffee Day | ITC Windsor | Taj West End | The Lalit Ashok | Le Meridian | Food World | Reliance Fresh | Nilgiris

CLUBS

Bangalore Golf Club | Chairman's Club | RMV Club | Patels Inn | Sadashivanagar Club

ZRICKS

On-going projects across India

Purva Whitehall
On Sarjapur Main Road,
Bengaluru

Purva Skywood
Off Sarjapur Road,
Bengaluru

Purva Venezia
Yelahanka,
Bengaluru

Purva Midtown Residences
Off Old Madras Road,
Bengaluru

Purva Atria
RMV IInd Stage,
Bengaluru

Purva Highland
Off Kanakapura Road,
Bengaluru

Purva Season
C.V. Raman Nagar,
Bengaluru

Purva Oceana
Marine Drive,
Kochi

Purva Eternity
Kakkanad,
Kochi

Purva GrandBay
Marine Drive,
Kochi

Purva Swanlake
OMR,
Chennai

Purva Windermere
Pallikaranai,
Chennai

Purva Bluemont
Singanallur, Trichy Road,
Coimbatore

Chennai

Call: +91-44- 44 55 55 55

E-mail: chennaisales@puravankara.com

Coimbatore

Call: +91-422- 44 55 55 55

E-mail: coimbatoresales@puravankara.com

Kochi

Call: +91-484- 44 55 55 55

E-mail: saleskochi@puravankara.com

ZRICKS

Dubai

Call: +971 43595818

E-mail: dubaisales@puravankara.com

Saudi Arabia

Call: +966 508520407

E-mail: ksa@puravankara.com

The pioneers of community living!

PURAVANKARA



ON CALL 24X7

+ 91 80 44 55 55 55

Corporate sales office on Ulsoor Road open from 8 a.m and 10 p.m on all days

Corporate / Regional Office: Puravankara Projects Limited, 130/1, Ulsoor Road, Bengaluru - 560 042.

Site Address: Geddalahalli, RMV IInd Stage, K.R. Puram Hobli, Bengaluru - 560 094.

Website: www.puravankara.com | Email: sales@puravankara.com

Purva Atria Platina is financed by Andhra Bank. Loans available from all leading banks.

This is a copyright material for only Puravankara Projects Limited

www.Zricks.com

CREDAI
BENGALURU